

WWF-ROMANIA: 20 YEARS FOR NATURE AND PEOPLE



20 ANI 
ÎN ROMÂNIA





CONTENTS

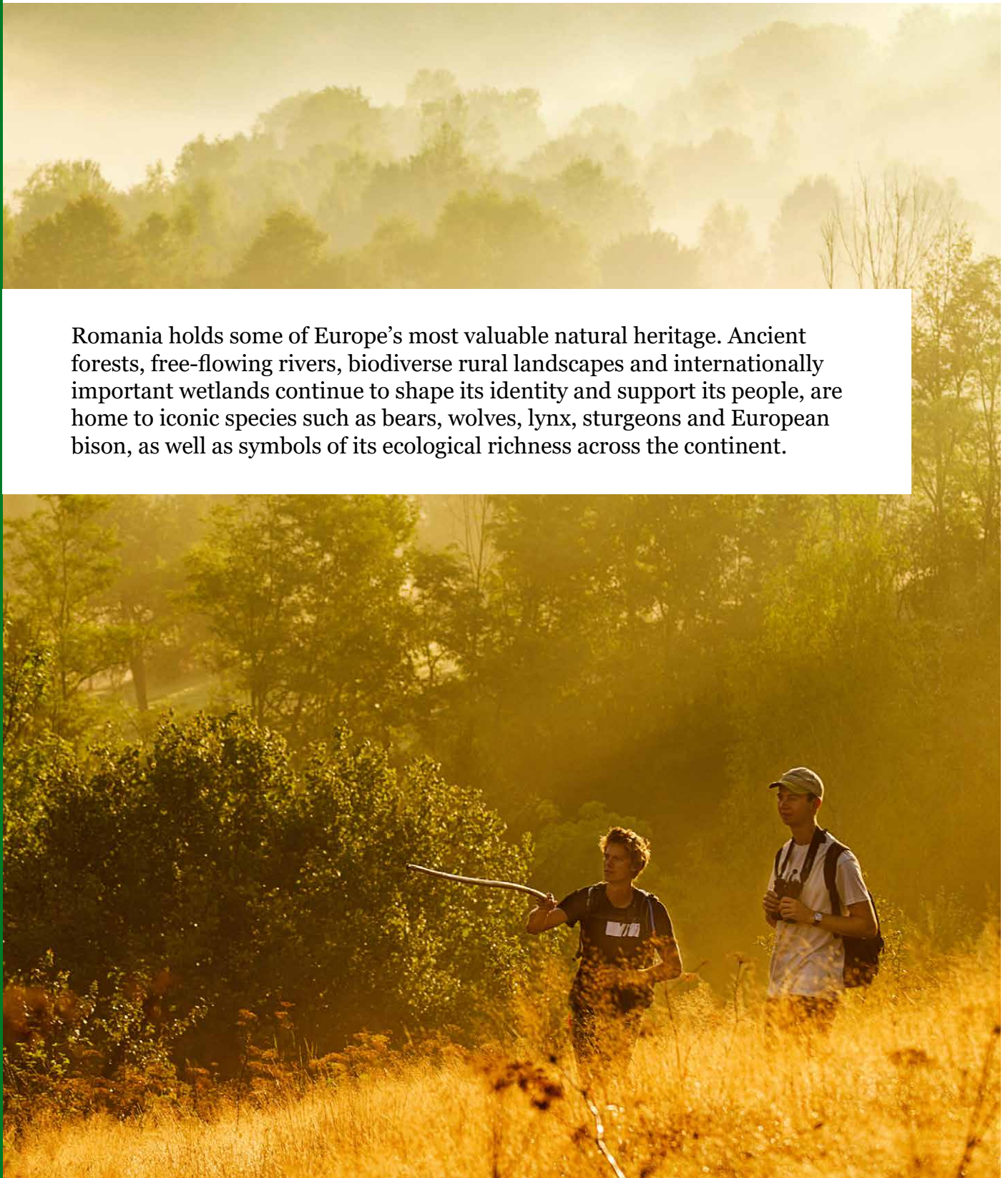
PROTECTING NATURE. STRENGTHENING COMMUNITIES. SHAPING THE FUTURE	4
A JOURNEY OF CHANGE	6
FRESHWATER: RESTORING RESILIENCE FOR NATURE AND COMMUNITIES	9
FORESTS: STRENGTHENING STEWARDSHIP AND TRANSPARENCY	15
WILDLIFE: SUPPORTING SPECIES RECOVERY AND COEXISTENCE	24
CLIMATE AND ENERGY: MAKING THE ENERGY TRANSITION FAIRER AND MORE SUSTAINABLE	32
FOOD SYSTEMS AND LOCAL LIVELIHOODS SUPPORTING BIODIVERSE LANDSCAPES	39
TWENTY YEARS OF CHANGE FOR NATURE AND COMMUNITIES	48
LOOKING TO THE NEXT 20 YEARS	51




PROTECTING NATURE. STRENGTHENING COMMUNITIES. SHAPING THE FUTURE

For twenty years, WWF-Romania has worked to protect the natural systems that sustain livelihoods and resilience across the country.

Romania holds some of Europe's most valuable natural heritage. Ancient forests, free-flowing rivers, biodiverse rural landscapes and internationally important wetlands continue to shape its identity and support its people, are home to iconic species such as bears, wolves, lynx, sturgeons and European bison, as well as symbols of its ecological richness across the continent.





But this natural wealth is under mounting pressure: from land-use change, particularly linked to food production; pressure on natural resources; illegal logging; poorly planned infrastructure; climate change; and increasing competition for land and water.

Over the past two decades, WWF-Romania has worked at the intersection of nature and people, helping shift how nature is valued, managed and integrated into Romania's future.

A JOURNEY OF CHANGE

What began as work on forests, rivers and wildlife has grown into a broader effort to influence how nature is understood and governed.



WWF-ROMANIA HAS WORKED AT SEVERAL LEVELS:

Protecting nature on the ground

In luencing policies and systems that drive its loss

Supporting communities to build sustainable livelihoods

Local action shaped national policy. Science informed practical solutions.

Partnerships across communities, authorities, researchers, and businesses helped turn these into lasting change.

Over time, this approach has begun to influence how decisions are made across sectors: from forests and rivers to energy, food systems, and local livelihoods.





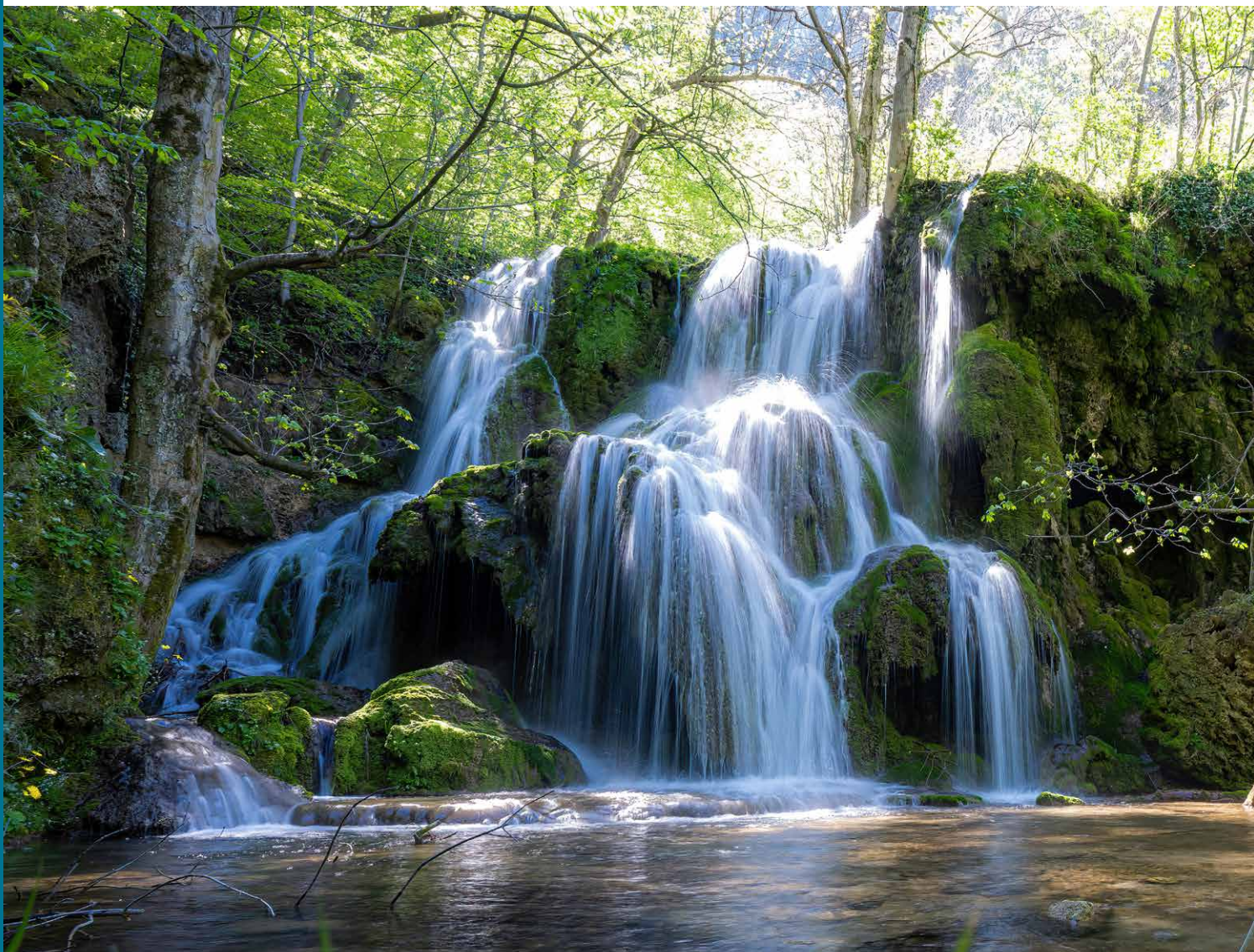
NATURE IS INCREASINGLY RECOGNISED AS PART OF THE SOLUTION

for wellbeing, resilience and long-term prosperity.

FRESHWATER: RESTORING RESILIENCE FOR NATURE AND COMMUNITIES

Romania's rivers, floodplains and wetlands are among the most valuable ecosystems in Europe. They reduce flood risks, support fisheries and agriculture, store carbon, filter water, and sustain biodiversity.

Yet many have been degraded or disconnected over time.



WWF-Romania has worked to reverse this trend by reviving wetlands, reconnecting rivers and helping make restoration part of long-term planning.

MAHMUDIA: BRINGING NATURE BACK INTO THE DANUBE DELTA

At Mahmudia, WWF helped demonstrate how wetland restoration can support biodiversity, local livelihoods and long-term resilience.

- 924 hectares restored to functioning wetland
- Natural water flows reconnected
- Biodiversity rapidly returned
- Nature-based tourism expanded
- Local communities support the long-term protection of restored wetlands.

When additional land returned to wetland conditions in 2023, residents chose to keep it that way.

Mahmudia shows what becomes possible when nature is given space to recover, and communities choose to be part of it.





GÂRLA MARE: REDUCING FLOOD RISK BY RECONNECTING FLOODPLAINS

At Gârla Mare-Vrata, WWF helped restore natural floodplain functions along the Danube.

- Over 400 hectares of floodplain reconnected
- Around 5 million m³ of floodwater retention capacity
- Habitat restored for more than 80 protected species
- Natural water retention strengthened in an area exposed to increasing flood risk

This work helped show that restoring natural water systems can reduce flood risk while rebuilding the ecological functions rivers and communities depend on.

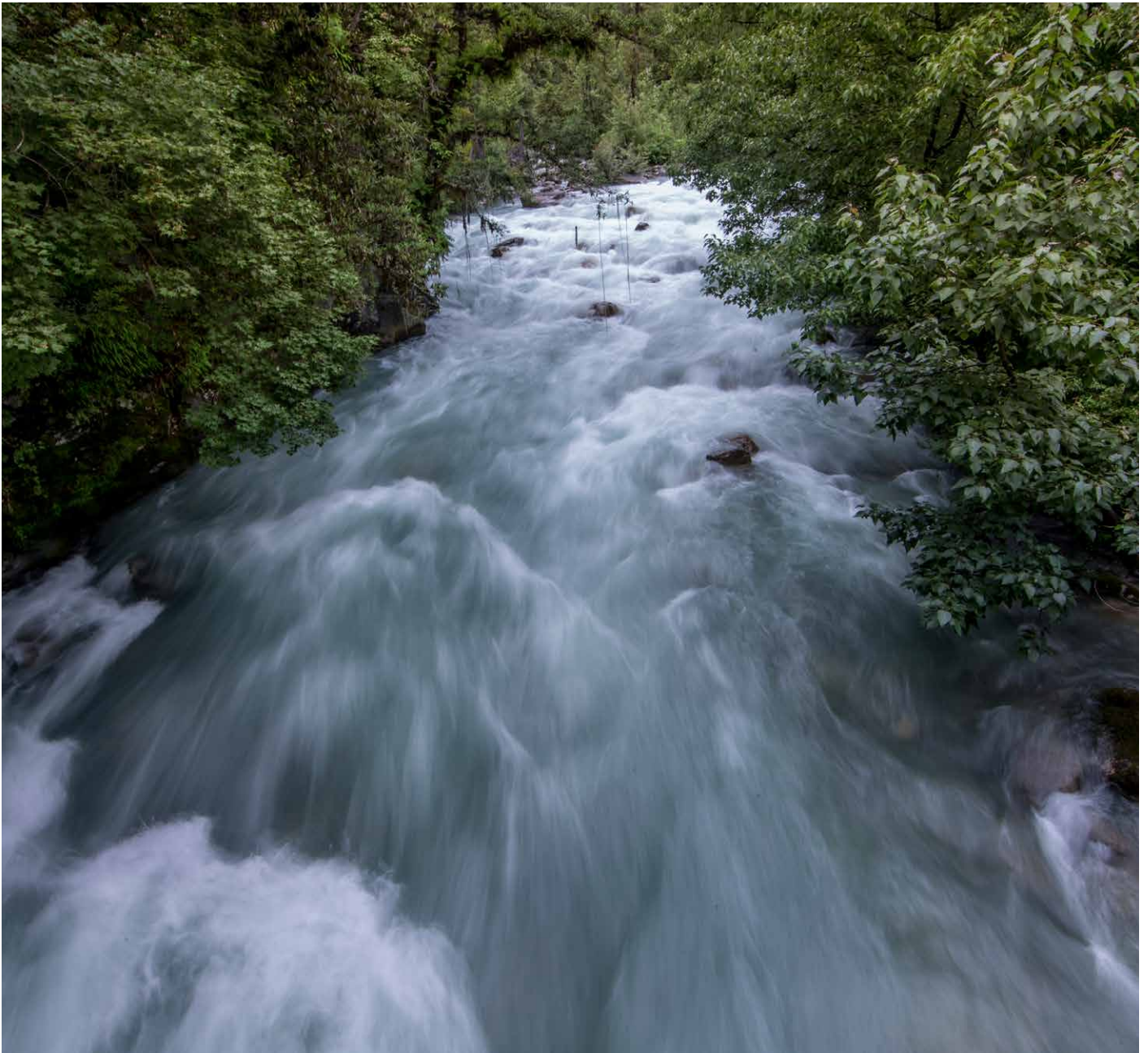
STRENGTHENING COOPERATION ACROSS THE LOWER DANUBE

WWF helped secure international recognition for some of the Lower Danube's most important wetlands between Romania and Bulgaria

- 3 shared wetland systems recognized as transboundary Ramsar sites: Bistreț–Ibisha, Suhaia–Belenes and Călărași–Srebarna
- Cross-border cooperation strengthened between Romania and Bulgaria since 2013
- Restoration priorities and management approaches aligned across internationally important wetlands
- Floodplain restoration gained visibility at landscape scale along the Lower Danube

By recognizing these wetlands as part of one connected system, this work helped move cooperation beyond parallel national efforts - toward shared responsibility for the future of the Lower Danube.





OPENING THE WAY FOR FREE-FLOWING RIVERS

WWF helped bring river connectivity into restoration discussions in Romania by initiating efforts to identify obsolete barriers that fragment rivers and disrupt ecosystems.

- A national methodology for identifying and prioritizing obsolete river barriers was developed
- Technical studies supported efforts to assess barriers on rivers such as Dejani, Caraş and Lăpuş
- River connectivity gained greater visibility in restoration and water management discussions
- Free-flowing rivers increasingly entered national conversations on climate resilience and water security

AS CLIMATE PRESSURES INCREASE, KEEPING RIVERS CONNECTED IS BECOMING INCREASINGLY IMPORTANT

for biodiversity, water security, and the resilience of communities.



FORESTS: STRENGTHENING STEWARDSHIP AND TRANSPARENCY

Romania's forests are among the most ecologically valuable in Europe. They store carbon, regulate water, support biodiversity, and provide livelihoods and cultural identity for communities across the country.

Over the past twenty years, WWF-Romania has helped strengthen forest protection while contributing to some of the country's most important advances in forest governance, transparency and responsible stewardship.

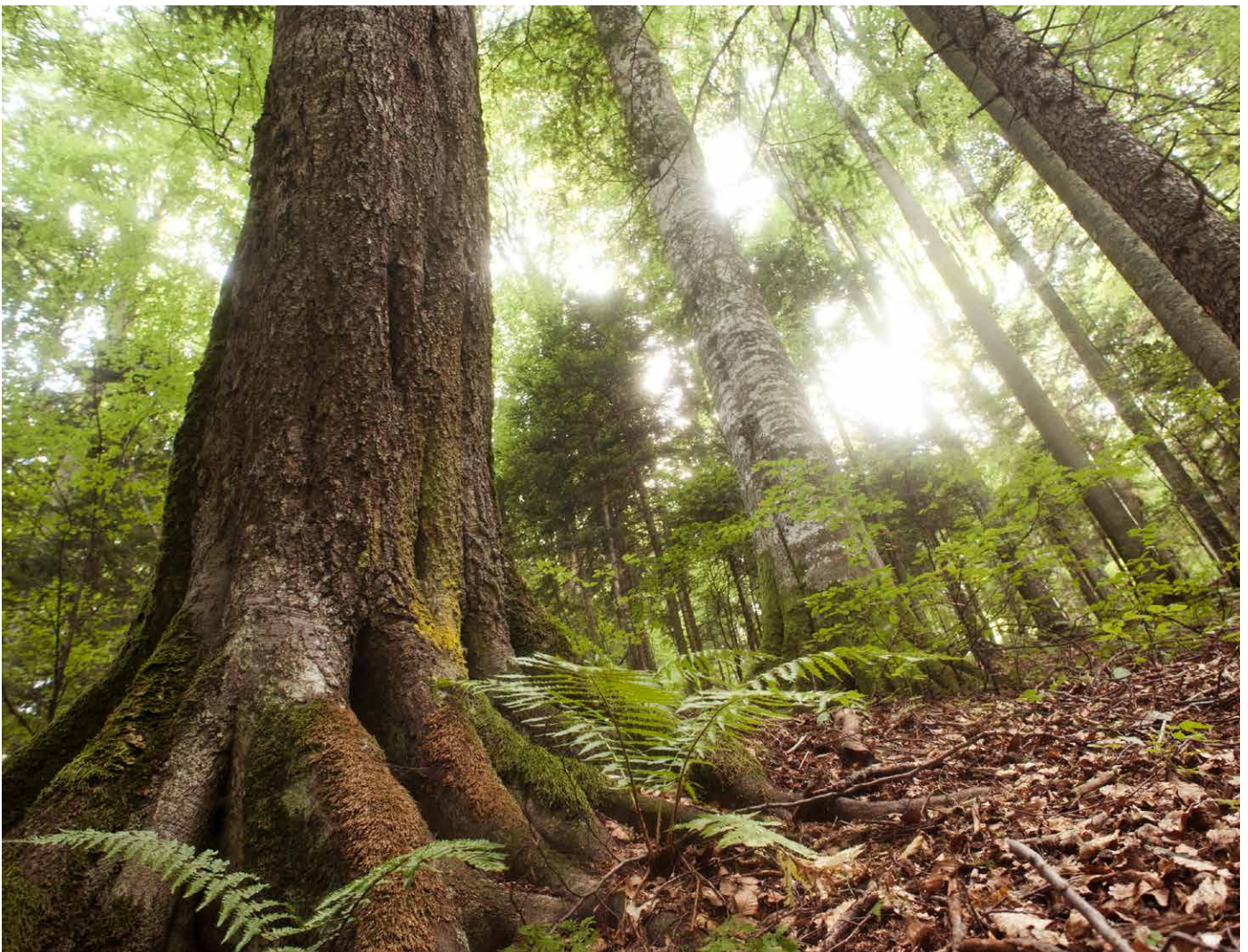
Today, forest management is more visible in public life, digital systems provide real-time information on timber transport, and closer-to-nature forestry is increasingly recognised as essential for healthy forests and resilient communities.

GIVING OLD-GROWTH FORESTS GREATER PROTECTION

WWF helped bring concepts such as High Conservation Value forests, participatory management planning and deadwood retention into mainstream forestry practice and policy.

- Deadwood retention is now explicitly recognized in the Forestry Code as a biodiversity conservation measure
- Retention and monitoring practices are applied across more than 2.8 million hectares of FSC-certified forests
- 300,000 hectares of High Conservation Value forests are managed through transparent and participatory processes
- 84,000 hectares of primary and old-growth forests are now under strict protection

This work helped strengthen recognition that healthy forests depend on ecological processes such as natural regeneration, habitat diversity, and the protection of old-growth ecosystems.





24,000 HECTARES ARE RECOGNIZED AS UNESCO WORLD HERITAGE FORESTS

supported by extensive buffer zones



ADVANCING TRANSPARENCY AND PARTICIPATION IN FOREST GOVERNANCE

WWF supported the transition toward a forest system that is more transparent, accountable, and open to public participation.

- Contributions supported Romania's first participatory National Forest Strategy 2030
- Public consultations and civic engagement in forest policy expanded
- More than 5,000 stakeholders were engaged in forest governance processes
- Transparency and participation became increasingly recognized as essential components of responsible forest management

Over time, forests became more visible in public debate, while citizens, institutions and civil society gained stronger tools to participate in decisions affecting forest landscapes.

TAKING TIMBER TRACEABILITY INTO THE DIGITAL ERA

WWF contributed to the development and continuous improvement of Romania's electronic timber traceability system, SUMAL.

- Timber transports became publicly traceable in real time through the Forest Inspector platform
- Citizens gained direct access to digital monitoring tools
- Romania now operates a fully digital timber traceability system
- More than 100,000 users and over one million public verifications are recorded every year

Digital transparency helped strengthen public oversight and made illegal practices more difficult to conceal.





MAKING ILLEGAL LOGGING HARDER TO CONCEAL

WWF promoted reforms focused on digital transparency monitoring, market accountability, enforcement, and protection mechanisms for small forest owners.

- Stronger monitoring and risk-based controls
- Expanded forest protection and guarding services nationwide
- Recognition of abusive forest management as a national security issue
- Improved public oversight



ILLEGAL LOGGING HAS NOT DISAPPEARED, BUT HAS BEEN SIGNIFICANTLY REDUCED

shifting from large-scale mountain clearances that once shocked public opinion to harder to conceal and less widespread actions.

PUTTING NATURE AT THE CENTER OF FOREST MANAGEMENT

WWF consistently promoted forestry approaches that protect ecological functions while supporting long-term social and economic value.

The 2024 Forestry Code further reinforces these principles.

- Closer-to-nature forestry is now recognized in the National Forest Strategy 2030
- Biodiversity considerations are increasingly integrated into forest management practices
- Romania's forest area has expanded by more than 60,000 hectares
- Average standing timber volume has increased over time

This work helped strengthen recognition that resilient forests are essential not only for biodiversity, but also for climate adaptation, water regulation, and long-term economic stability.





GIVING FOREST-DEPENDENT COMMUNITIES A STRONGER VOICE

WWF helped strengthen recognition of the social dimension of forest governance and the role of communities that depend on forest resources.

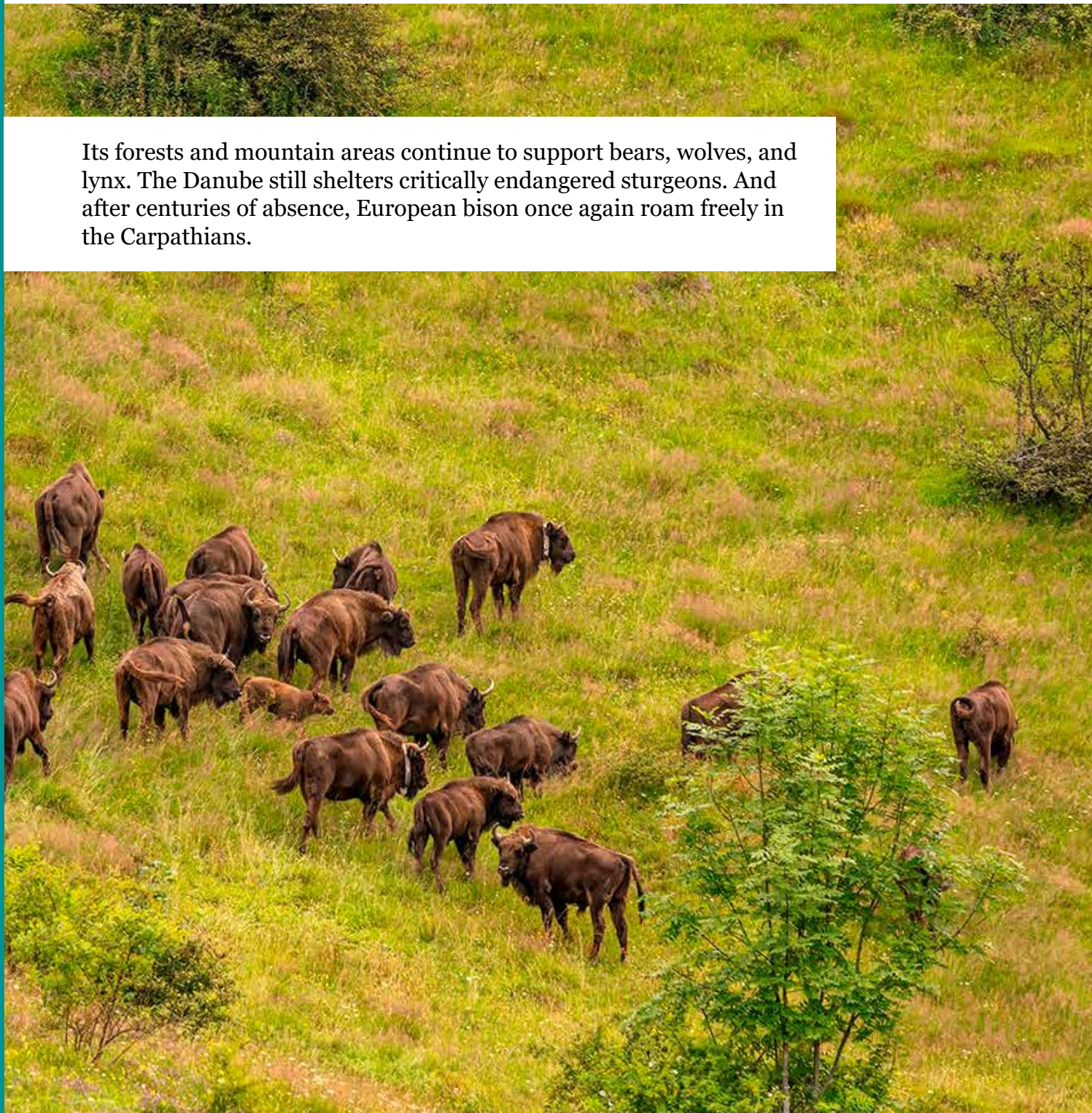
- The National Forest Strategy 2030 formally recognizes forest-dependent rural communities
- The revised Forestry Code establishes a legal basis for the formal designation of Forest-Dependent Communities
- Advocacy supported EU-funded silvo-environmental schemes for biodiversity- and climate-friendly forestry practices
- Approximately 200,000 hectares benefit from compensation mechanisms linked to biodiversity and climate objectives

Together, these measures reflect growing recognition that healthy forests and resilient rural communities depend on one another.

WILDLIFE: SUPPORTING SPECIES RECOVERY AND COEXISTENCE

Romania is home to some of Europe's most important wildlife populations.

Its forests and mountain areas continue to support bears, wolves, and lynx. The Danube still shelters critically endangered sturgeons. And after centuries of absence, European bison once again roam freely in the Carpathians.



Over the past twenty years, WWF-Romania has helped strengthen species recovery, ecological connectivity and coexistence between people and wildlife.

RETURNING EUROPEAN BISON TO THE CARPATHIANS

WWF helped bring the European bison back to Romania after nearly 200 years of absence.

- The first bison were reintroduced in 2014
- Multiple relocation transports followed over the following years
- Free-roaming populations were re-established in the Țarcu Mountains
- Around 250 bison now roam the South-Western Carpathians, forming one of Eastern Europe's largest free-roaming populations

The return of the bison became a symbol of ecological recovery, long-term collaboration and growing local pride in the Carpathians.

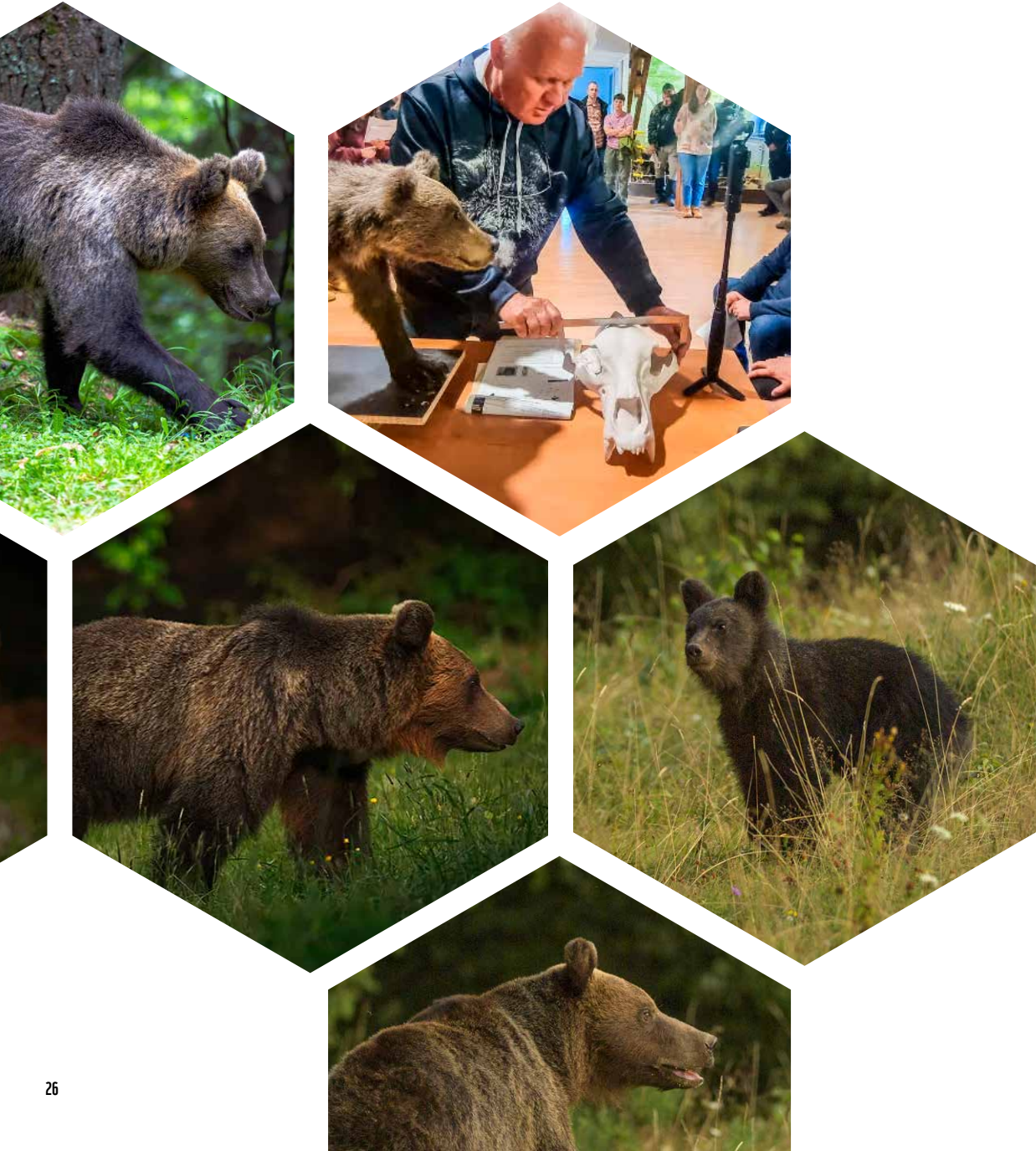


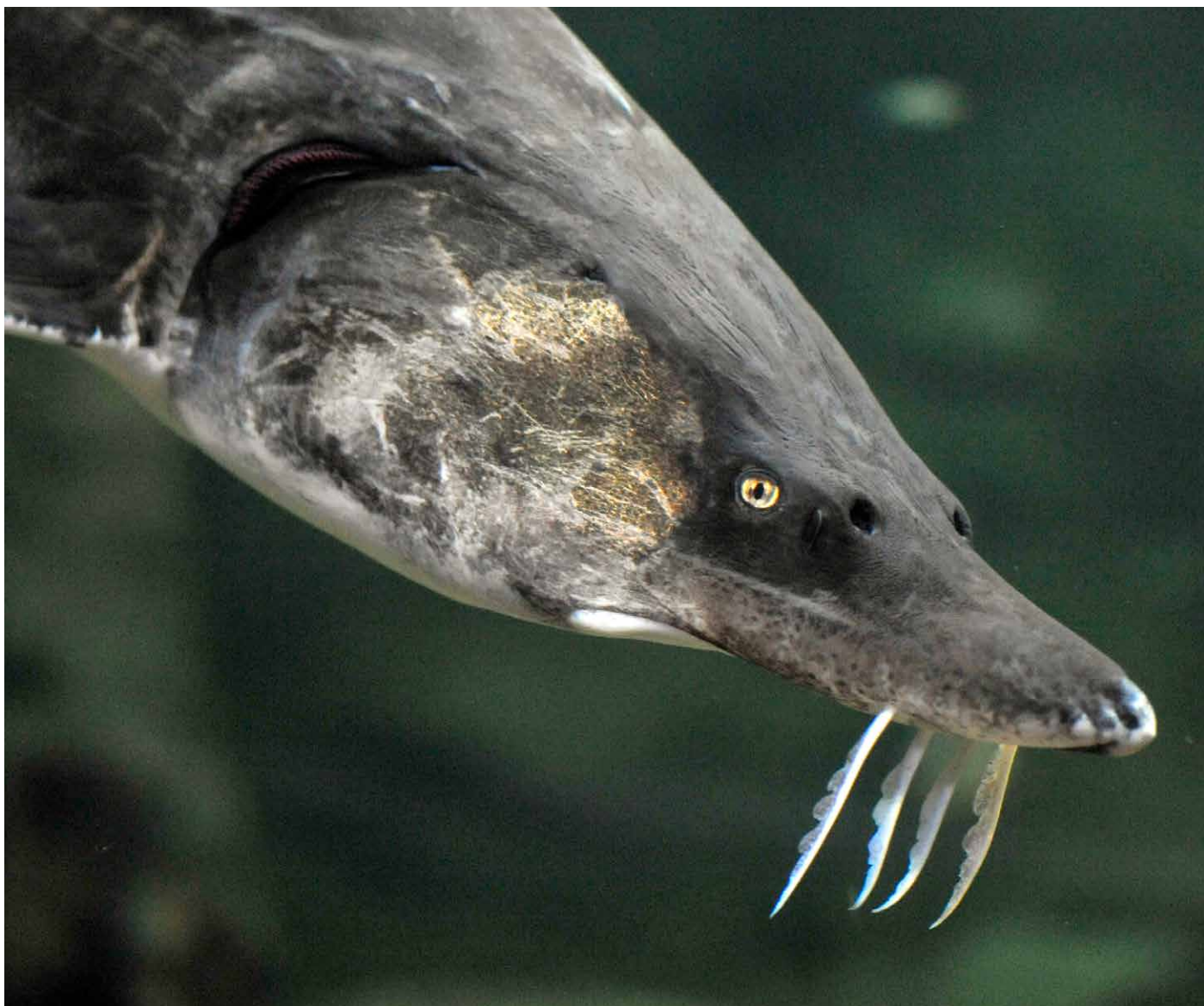
BUILDING THE FIRST BEAR-SMART COMMUNITIES IN ROMANIA

In Băile Tuşnad, WWF supported the creation of Romania’s first bear-smart community.

- Waste management systems were improved to reduce attractants for bears
- Local monitoring and response systems were strengthened
- Prevention measures and public awareness activities were introduced
- Cooperation expanded between authorities, experts, tourism operators and residents

This model helped show that coexistence between people and large carnivores can be strengthened through practical solutions, local engagement, and coordinated action.





PROTECTING STURGEONS IN THE DANUBE

WWF supported regional cooperation efforts to protect Danube sturgeons, some of the world's oldest fish species and among the most threatened in Europe.

- More than 60,000 young sturgeons were released into the Danube as part of recovery efforts
- Romania's first system for reporting accidental sturgeon bycatch was established
- A Social Recognition Scheme encouraged fishers to report accidental catches
- More than 370 bycatch reports helped improve knowledge of critically endangered populations
- Fishers, scientists and authorities worked together to strengthen monitoring and data collection

This work helped strengthen recognition that protecting sturgeons depends not only on species conservation, but also on healthy free-flowing rivers, regional cooperation, and long-term protection of migratory routes.

CONNECTING LANDSCAPES FOR WILDLIFE MOVEMENT

WWF identified Romania's first network of ecological corridors for bears, wolves and lynx, helping bring wildlife movement into conservation and land-use planning discussions.

- Ecological corridors connecting important habitats were identified and mapped
- Wildlife connectivity gained stronger recognition within the Carpathian Convention framework
- Greater attention was brought to the impacts of roads and infrastructure on wildlife movement
- Conservation planning increasingly recognized the importance of connected landscapes





**THIS WORK HELPED MOVE
CONSERVATION BEYOND ISOLATED
PROTECTED AREAS TOWARD
A BROADER LANDSCAPE APPROACH**

supporting long-term species survival.





WWF SUPPORTED THE DESIGNATION AND STRENGTHENING OF NATURA 2000 PROTECTED AREAS ACROSS ROMANIA

helping improve protection for important
habitats and species.

EXPANDING SPACE FOR WILDLIFE AND NATURE

- Management plans were developed for areas of high biodiversity value
- Cooperation between environmental organizations expanded through the Natura 2000 Coalition
- Protected areas gained stronger visibility in land-use and development discussions
- Biodiversity conservation became more integrated into local and regional planning

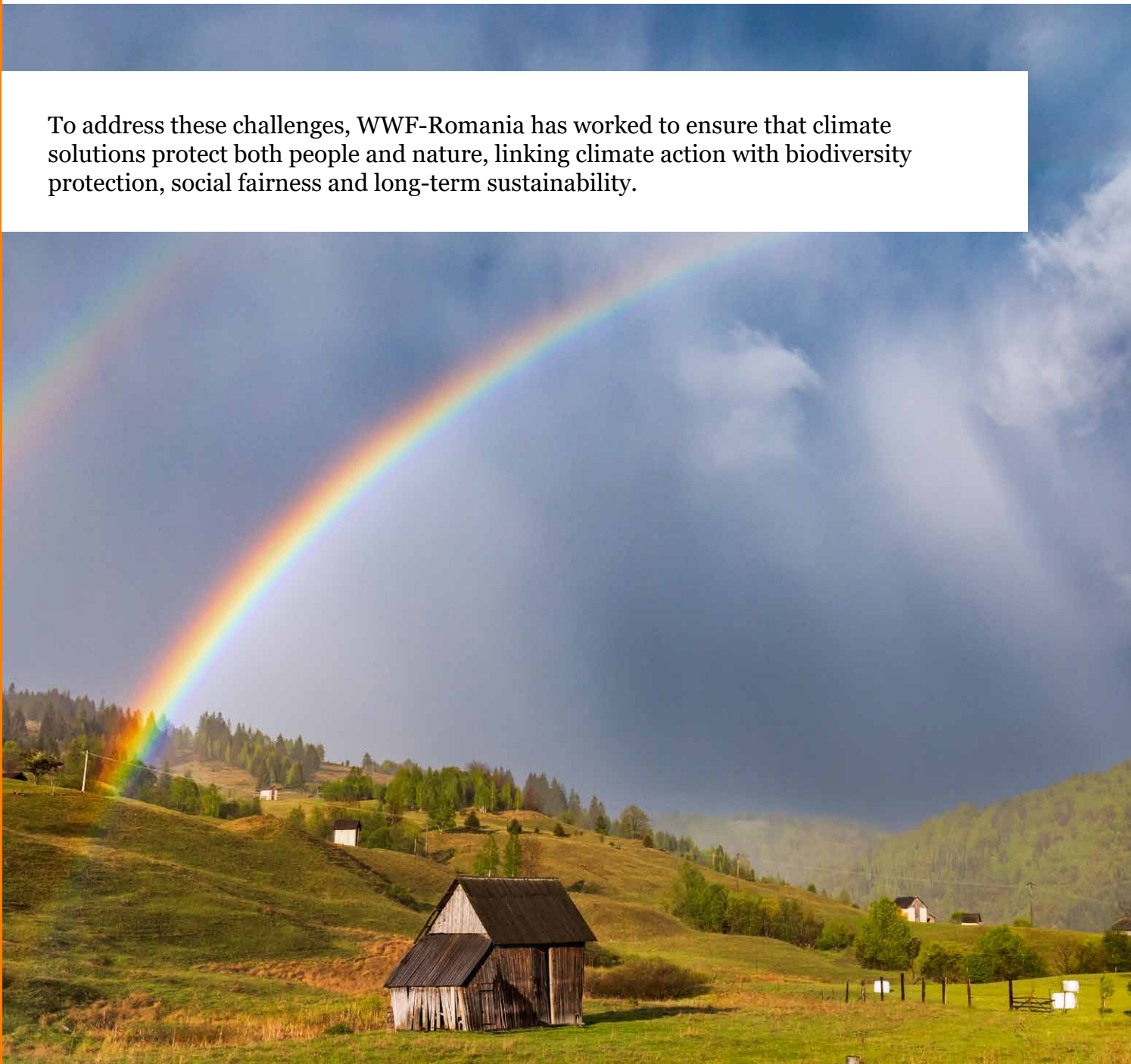
These efforts helped strengthen the long-term protection of habitats that wildlife depends on across Romania.



CLIMATE AND ENERGY: MAKING THE ENERGY TRANSITION FAIRER AND MORE SUSTAINABLE

Climate change is no longer a distant risk. It is already affecting communities, ecosystems and economies across Romania.

To address these challenges, WWF-Romania has worked to ensure that climate solutions protect both people and nature, linking climate action with biodiversity protection, social fairness and long-term sustainability.



This work helped bring climate discussions closer to schools, cities, local communities and public institutions, while contributing to a more inclusive and nature-positive approach to Romania's energy transition.

EMPOWERING YOUNG PEOPLE TO SHAPE CLIMATE SOLUTIONS

Through youth climate initiatives, WWF supported hundreds of young people across Romania in understanding climate change and developing local solutions.

- Young people participated in climate education and awareness activities
- Civic participation initiatives encouraged engagement in local decision-making and community action
- Workshops focused on practical climate and sustainability solutions
- Participants developed proposals for greener cities, including renewable energy, mobility and urban green spaces

This work helped show that young people are not only future leaders, but active contributors to climate action and more resilient communities.



BRINGING CLIMATE ACTION INTO CITY PLANNING

WWF supported municipalities through initiatives such as the One Planet City Challenge and connected them to international reporting platforms.

- Cities improved climate planning and monitoring processes
- Public participation in local climate discussions increased
- Local action became more closely linked to international climate frameworks
- Municipalities strengthened local capacity for climate action and resilience planning

Climate action increasingly became part of how cities plan for public wellbeing, resilience and sustainable development.





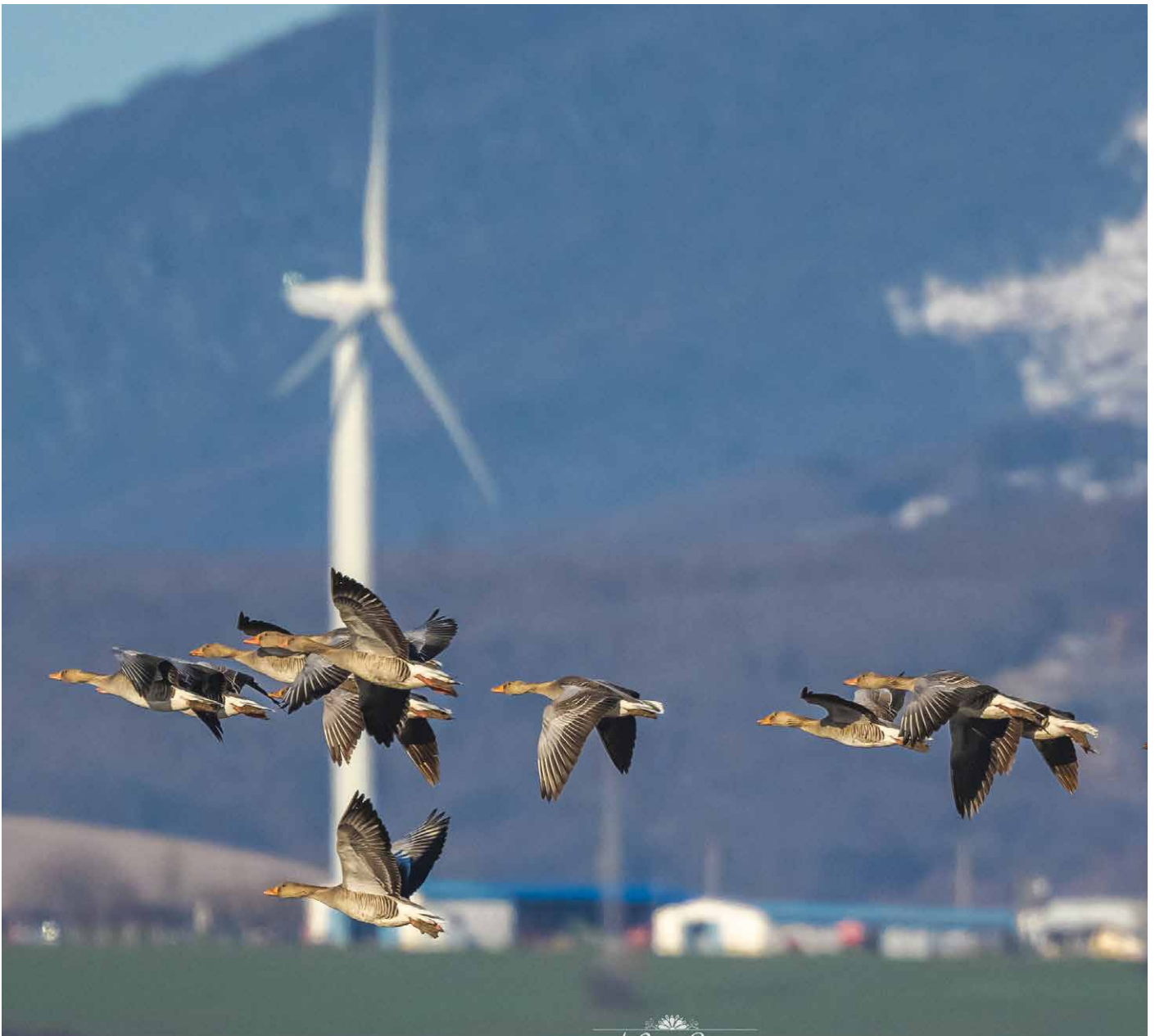
EMBEDDING ENERGY POVERTY IN CLIMATE POLICIES

WWF helped develop Romania's first local action plan addressing heating and energy poverty in Lăpuș, Maramureș.

- Greater visibility was brought to the needs of vulnerable households in climate policy discussions
- The specific challenges faced by rural households relying on firewood for heating gained stronger recognition
- Local evidence contributed to broader discussions on fair climate transition measures
- Practical solutions highlighted how climate and social policies can better reflect the realities of vulnerable communities

This work helped strengthen recognition that a fair energy transition must also address social vulnerability and access to affordable energy.





MAKING RENEWABLE ENERGY PLANNING MORE NATURE-POSITIVE

WWF contributed to renewable energy planning approaches that better integrate biodiversity considerations and local realities.

- Science-based methodologies identified lower-conflict areas for solar and wind development
- Planning approaches promoted the avoidance of sensitive ecosystems and reduced conflicts with nature and communities
- A methodology was tested in pilot regions such as Braşov and Prahova
- Practical tools and recommendations supported future renewable energy planning processes in Romania

This work reinforced a key principle of WWF's approach: climate solutions are strongest when they also protect nature and support communities.

REDUCING PRESSURE FROM HARMFUL HYDROPOWER DEVELOPMENT

WWF advocated for alternative solutions for hydropower, that avoid damaging sensitive ecosystems and free-flowing rivers.

- More than 15,000 citizens were mobilised through campaigns supporting the protection of free-flowing rivers
- Mapping tools highlighted overlaps between hydropower development and valuable river ecosystems
- Ecologically valuable rivers such as Nera, Topolog, Şucu, Oleana, Bistra Mărului, Mara and Cosău were protected from harmful hydropower projects
- Public recognition grew that climate solutions should not come at the expense of biodiversity

Together, these efforts helped strengthen a more balanced approach to energy transition, one that considers climate, nature and communities together.



FOOD SYSTEMS AND LOCAL LIVELIHOODS SUPPORTING BIODIVERSE LANDSCAPES

Food systems shape the relationship between people, nature and local economies.



The way food is produced, distributed and consumed influences biodiversity, soil health, climate resilience and the wellbeing of communities across Romania.

PUBLIC FOOD PROCUREMENT SUPPORTING HEALTHIER AND MORE LOCAL FOOD

WWF supported the shift from lowest-price food procurement toward quality-based public purchasing benefiting children, local producers and the environment.

- More than 22,200 children in Braşov received healthier food and the opportunity to visit the local farms in a successful first pilot which generated changes in the national legislation
- Stronger quality criteria were introduced into the School Programme, including certified organic products, local producers and short supply chains with potential relevance for more than 1.9 million beneficiaries every school year
- National quality procurement criteria gained stronger credibility with the introduction of mandatory targets for green procurement across sectors including food and catering through the first National Green Procurement Plan 2025-2030
- More than 200 local producers and public servants involved in procurement procedures for public institutions were trained in green procurement and over 30k people learned about this topic through our awareness-raising efforts This work helped show that public food systems can support healthier diets, local livelihoods and more sustainable agricultural practices at the same time.





CONNECTING FARMERS AND SCIENCE AROUND CLIMATE-RESILIENT AND BIODIVERSITY-FRIENDLY AGRICULTURE

WWF helped create an inclusive dialogue between farmers, climatologists, researchers and public authorities on climate risks affecting agriculture and food security, after years of science-based, actionable policy proposals and advocacy for the integration and protection of biodiversity, High Nature Value farming practices and small and family producers in the agricultural policy and market system.

- Farmers' realities and local knowledge became more visible in climate and agricultural discussions
- Scientific information was translated into more practical and locally relevant insights and policy proposals
- Discussions around the need for more resilient and inclusive food systems gained stronger attention
- Soil health, biodiversity and long-term farm viability all became part of the conversation which revealed systemic vulnerability

This work helped strengthen the recognition that climate adaptation in agriculture depends on both scientific knowledge, local experience, and policy and market improvements, which should all be brought together on principles of inclusivity and fairness.

Climate adaptation and biodiversity restoration and protection on farmlands go hand in hand and will dictate the viability and resilience of farms in the near future.



WWF HELPED RAISE AWARENESS AND CONCRETE ACTION ON POLLINATOR DECLINE

and its links to agriculture, biodiversity, urban development, food security and public health and wellbeing.

POLLINATORS GAINING VISIBILITY IN AGRICULTURE AND ACROSS CIVIL SOCIETY

This work helped strengthen the recognition of the essential role pollinators play in healthy ecosystems and resilient food systems.

- More than 14,000 people supported a national petition on pollinator protection while 5,000 submitted their concrete ideas and wishes
- Romania's first coordinated civil society platform on pollinators was established
- Scientific evidence was generated on pesticide presence and pollinator habitats
- Policy dialogue expanded through government-level roundtables and youth initiatives





HELPING A NEW GENERATION GROW CLOSER TO NATURE

WWF built and applied innovative environmental education approaches connecting knowledge with practical action and everyday choices.

- Programmes such as “Școli verzi” reached hundreds of classes across 41 counties
- Thousands of teachers and youngsters were trained and involved in learning sessions and youth clubs set up in biodiverse areas
- Immersive learning experiences were developed around biodiversity, climate, food systems and sustainable consumption
- The comic book series “Beyond the horizon” helped bring young families living in urban settings closer to the natural and cultural richness of three regions of outstanding beauty in our country (Transylvania, Maramures, Banat)

This work helped strengthen connections between environmental education, awareness, civic engagement and long-term behavioural change.

GROWING NATURE-BASED LOCAL ECONOMIES

WWF co-founded and supported local initiatives showing how biodiversity, cultural heritage and responsible resource use can create long-term value and opportunities for local communities.

- Ecotourism destinations such as EcoMaramureş and Colinele Transilvaniei were co-founded and constantly supported
- Partnerships expanded between protected area managers, local authorities, local entrepreneurs and producers
- More than 500 km of hiking and cycling trails contributed to a growing ecotourism network
- Initiatives such as the WeWilder campus demonstrated how conservation can support local income, jobs and sustainable livelihoods built on ecological and circular principles, especially in the food sector but also in other sectors involved in hospitality

This work helped show that healthy landscapes and diverse, local foods produced responsibly can also create economic opportunities and strengthen the local identity.



TESTING NEW APPROACHES TO CONSERVATION FINANCE

WWF piloted Romania's first Payments for Ecosystem Services approaches, exploring how communities maintaining healthy ecosystems can be supported through conservation finance.

- A Payments for Ecosystem Services scheme linked sustainable aquaculture with bird conservation in a Natura 2000 site in Călărași county, helping to set the ground for the development of ecotourism services and new income streams for the fish farm
- A local conservation fund was developed in Historic Maramureș and used to bring forth the lost beauty and natural treasures of the Crăiască Forest through a thematic trail built with local craftsmanship and young people
- Practical experience from the ground contributed to broader discussions on innovative financing for nature and rural development amongst institutional partners and in international professional settings.





TOGETHER, THESE EFFORTS HELPED CONNECT CONSERVATION WITH TOURISM, FOOD SYSTEMS, LOCAL ECONOMIES AND COMMUNITY ACTION

while showing that healthier landscapes and stronger communities depend on one another.

TWENTY YEARS OF CHANGE FOR NATURE AND COMMUNITIES

Across forests, rivers, wildlife, climate and communities, a common pattern emerges.

Over the past twenty years, WWF-Romania has helped contribute to lasting shifts in how nature is protected, understood and integrated into public life.



These changes did not happen through a single project or campaign. They were built through long-term partnerships, scientific evidence, local engagement and the belief that durable solutions must also work for communities.

THE PAST TWO DECADES ALSO BROUGHT IMPORTANT LESSONS.

Conservation works best when it is fair

Communities are more likely to support conservation when they participate in decisions, benefit from local opportunities and see tangible improvements in everyday life.

Transparency builds trust

Digital tools, open data and participatory governance strengthen accountability, oversight and more responsible environmental governance.

Restoration creates long-term value

Healthy ecosystems reduce climate risks, support economic economies, and strengthen water and food security over time.

Young people help drive change

Education, civic participation and local action play essential roles in shaping long-term environmental responsibility.

Nature underpins long-term development

Climate policy, infrastructure, agriculture, tourism and energy systems all depend on healthy ecosystems and functioning natural landscapes.





LOOKING TO THE NEXT 20 YEARS

Romania still faces major challenges. Climate change is accelerating. Biodiversity loss continues. Natural resources remain under pressure, while communities and institutions face increasing social, economic and environmental uncertainty.



The next chapter of conservation will require more than protecting individual species or landscapes. It will depend on addressing the underlying causes of nature loss across agriculture, energy, infrastructure, finance and consumption patterns.

LOOKING TO THE NEXT 20 YEARS

This means encouraging economic models that recognize the value of healthy ecosystems, helping businesses and financial actors reduce environmental impacts, and integrating biodiversity considerations more consistently into public policy and investment decisions.

It also means responding to broader societal challenges: reducing disaster risks, strengthening water and food security, improving the relationship between environmental and human health, and supporting local economies that depend on functioning ecosystems.

For rural communities and small producers, the transition ahead must create fairer access to markets, funding and long-term economic opportunities linked to sustainable practices.

The past twenty years showed that meaningful progress is possible when scientific knowledge, local experience, public participation and institutional cooperation come together.

WWF-Romania enters its next chapter with deeper expertise, stronger partnerships and a continued commitment to practical solutions grounded in collaboration, accountability and long-term thinking.





**PROTECTING NATURE IS NO LONGER
ONLY AN ENVIRONMENTAL RESPONSIBILITY.
IT IS PART OF BUILDING A HEALTHIER,
SAFER AND MORE PROSPEROUS
FUTURE FOR ROMANIA.**

CREDITS

WWF-Romania

2026

Graphic Design and illustrations

Daydream Creative Studio

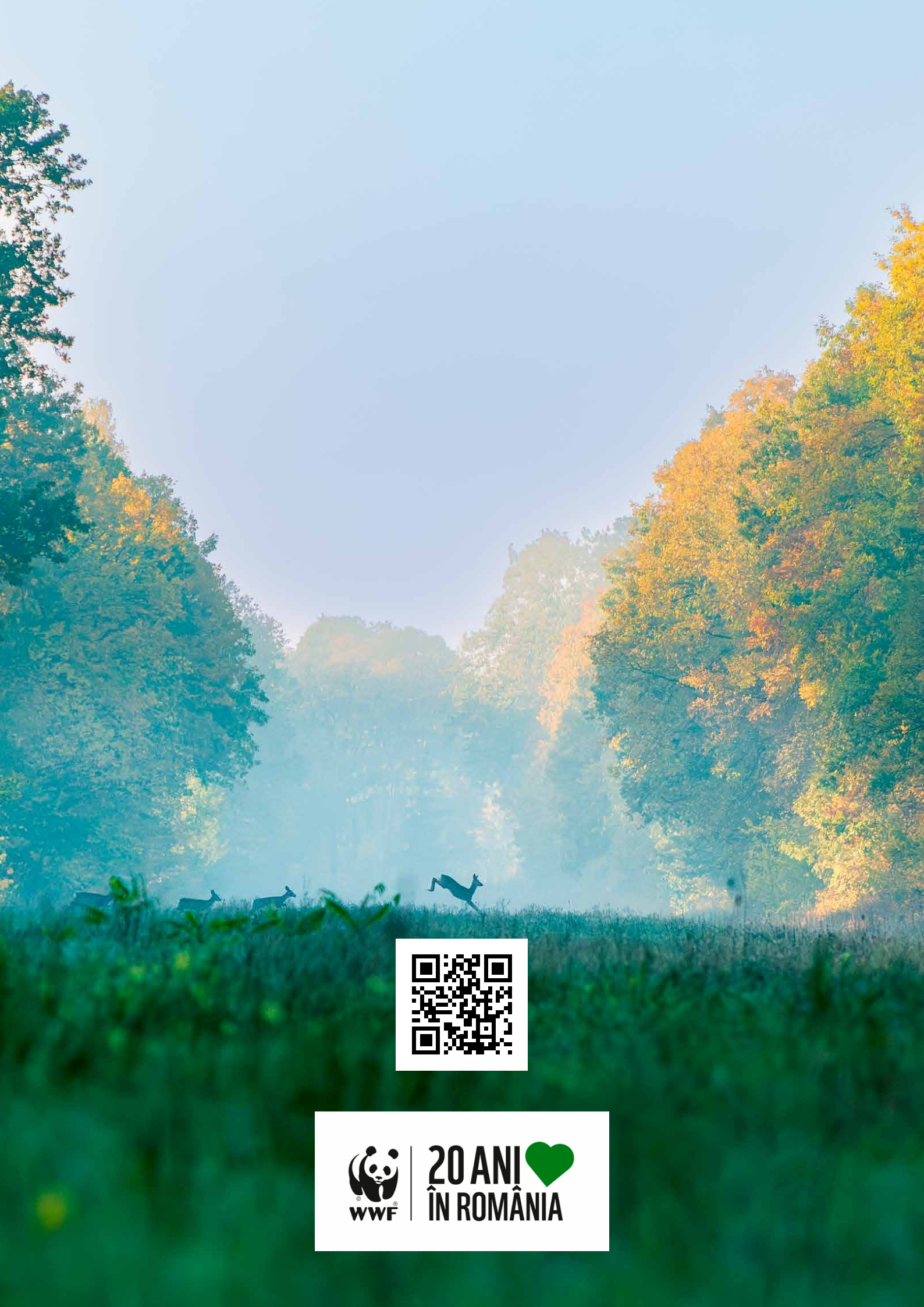
Photo Credits

Sorin Onișor, WWF-Romania, Dan Dinu, Doru Opreșan, Bogdan Comănescu, Matei Pleșa, Daniel Mîrlea, Nicolae Sain, Vlad Dumitrescu, Cătălin Georgescu, Marius Vasile, Anamaria Dinulescu, Raed Krishan, Tomas Hulik, Staffan Widstrand - Wild Wonders of Europe, Cornelia Doerr, Michel Gunther, Olga Kashubin, WWF

Disclaimer

This report documents WWF-Romania's twenty-year engagement across wildlife conservation, forest governance, freshwater restoration and stewardship, climate adaptation, just energy transition, sustainable community development, and policy and advocacy work.





 | **20 ANI** 
ÎN ROMÂNIA