



#NaturaAcasa



Corporate Partnerships Report FY 2022 WWF-Romania

WWF is one of the world's largest and most experienced independent conservation organizations, with over 5 million supporters and a global network active in more than 100 countries. WWF's mission is to stop the degradation of the planet's natural environment and to build a future in which humans live in harmony with nature, by conserving the world's biological diversity, ensuring that the use of renewable natural resources is sustainable, and promoting the reduction of pollution and wasteful consumption.

NATURE AT THE BRINK

WWF's Living Planet Report shows that humanity and the way we feed, fuel, and finance our societies and economies is pushing nature and the services that power and sustain us to the brink. Agricultural expansion, deforestation, overfishing, urban development, energy use, mining and pollution are all driving habitat loss, water shortages and climate change. In addition, every year, the World Economic Forum Risks Report continues to show the increase in the scale and urgency of environmental risks to the global economy, as well as the deepening interconnections between environmental issues, economic strains, and geopolitical tensions.

We cannot afford to be complacent. In fact, we need to move into an emergency and solutions-based mindset. The landmark Intergovernmental Panel on Climate Change (IPCC) report, Global Warming of 1.5 °C, paints a clear but dire picture. It states that to avoid the most serious impacts of climate change, we need to drastically transform the world economy in the next few years. Allowing nature to fail will disrupt business, undermine economies and drive social instability.

The good news is that we also have an unparalleled opportunity for positive change – the science is clearer, awareness is greater, and innovation more powerful than ever before. We can redefine our relationship with nature – but we need to work together. One organisation alone cannot deliver the change we need. That is why WWF collaborates with business – working in partnership – to find solutions and act at a scale that matters.

TAKING BOLD COLLECTIVE ACTION

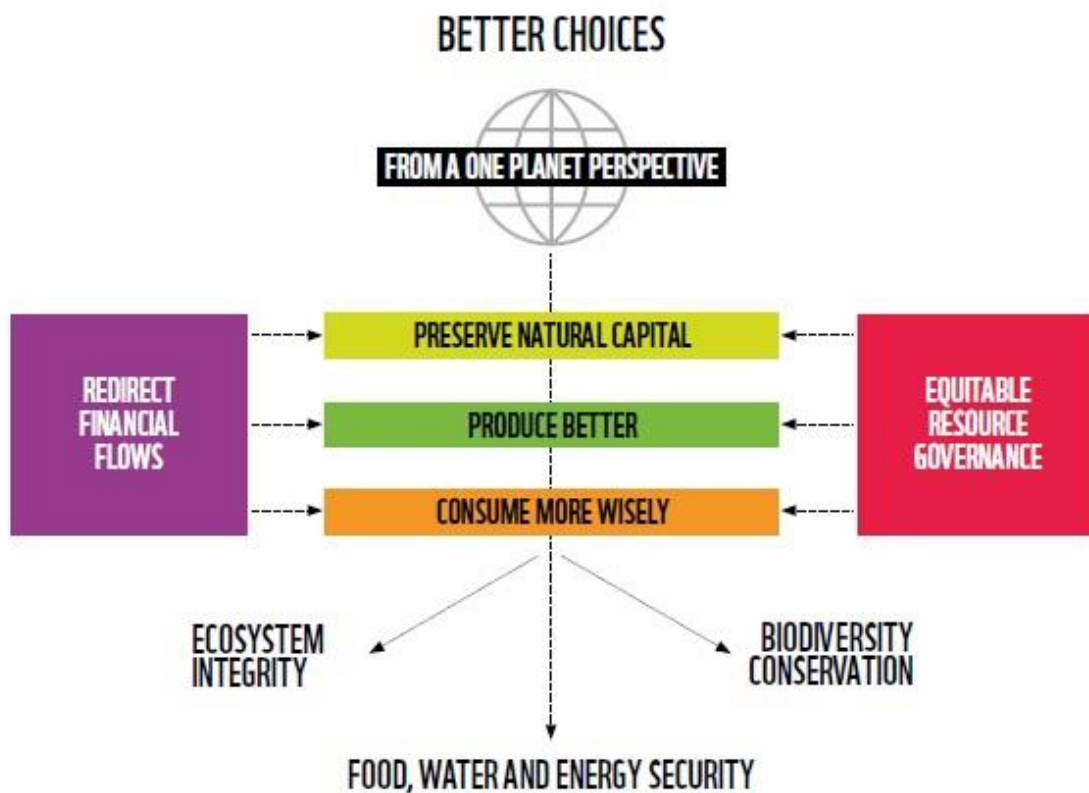
The time to act is now. We have put in place a global conservation strategy that reflects the way the world is changing, meets the big environmental challenges of the age and helps us simplify, unite and focus our efforts for greater impact.

WWF continues to deliver locally in crucial ecoregions around the world but sharpen our focus on six global goals – wildlife, forests, oceans, freshwater, climate and energy, and food – and three key drivers of environmental degradation – markets, finance and governance. We are creating global communities of practice for each of the goals and drivers composed of specialists from WWF and key external partners. This will foster greater collaboration and innovation, incubating new ideas and taking promising ones to scale, as we unite our efforts toward making ambitious targets a reality.

We know that one organization alone can't effect the change needed. That is why our work on the goals and drivers includes our partnerships with institutions and corporations, both local and global. The changes we want to see in the world can only come about through the efforts of many actors: local communities and national and multinational corporations, governments and NGOs, finance institutions and development agencies, consumers, and researchers.

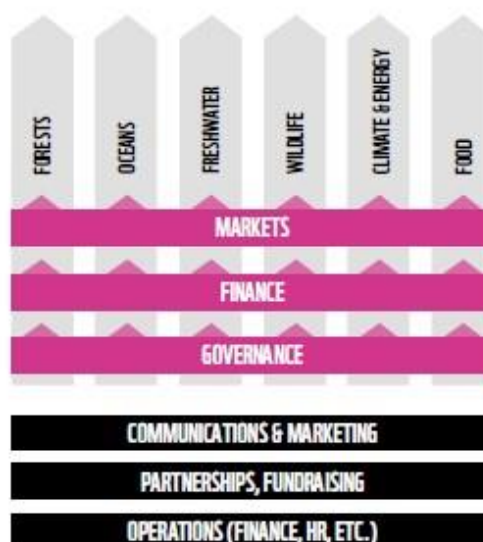
There has never been a stronger sense of urgency for action. In WWF we are defining new ways of working together to make a difference at a scale that matters. We know we must redefine humanity's relationship with the planet. And together we passionately believe we can.

WWF'S GLOBAL VISION FOR CHANGE



HOW WE MAKE IT HAPPEN

**6 GLOBAL GOALS,
3 CROSS-CUTTING DRIVERS,
DELIVERED BY POWERFUL
COMMUNITIES OF PRACTICE
AND PARTNERS**



OUR WORK WITH THE CORPORATE SECTOR

WWF's mission is to stop the degradation of the planet's natural environment and to build a future in which humans live in harmony with nature.

Therefore, WWF seeks to work with those who have the greatest potential to reduce the most pressing threats to the diversity of life on Earth and together find solutions to conservation challenges such as deforestation, over-fishing, water scarcity and climate change. The corporate sector drives much of the global economy, so we consider that companies also have a specific responsibility to ensure that the natural resources and ecosystems that underpin their business are used sustainably. Companies are also primed to lead on rapid adaptation and on the innovative solutions needed to drive change.

We do this in a variety of ways, including supporting regulations that stop illegal or unsustainable activities, encouraging companies and industry platforms such as the [UN Global Compact](#), [Science Based Targets](#), the [Consumer Goods Forum](#) to make ambitious commitments (and to engage in public policy discussions at global and local level, and supporting credible certification schemes (e.g. [Forest Stewardship Council](#) (FSC), [Aquaculture Stewardship Council](#) (ASC), [Roundtable on Sustainable Palm Oil](#) (RSPO), [Roundtable on Responsible Soy](#) (RTRS), [Better Cotton Initiative](#) (BCI)). We also publish scorecards and reports on company or sector performance (e.g. [palm oil scorecard](#); [soy scorecard](#), and [sustainable cotton ranking](#)), mobilize public pressure through high-profile campaigns on issues related to business activities (e.g. [Business for Nature](#), [No Deep Sea Mining](#), [Coalition to end wildlife trafficking online](#)), as well as work in partnership with individual companies.

This report presents an overview of the partnerships that this WWF office has with individual companies

OUR WORK IN CORPORATE PARTNERSHIPS

Our cooperation with partners is based on a common understanding of issues, shared ambitions or activities, and a willingness to speak out in public. In general, we distinguish three types of partnerships with companies:

1. Driving sustainable business practices

Our partnerships aim to deliver direct conservation results on key issues or in priority places by changing practices throughout a company's operations and value chain. These intend to reduce the major environmental impacts of some of the world's largest companies, achieve conservation results that would not otherwise be possible, and influence related sectors and markets.

2. Communications and awareness raising

The second way that WWF partners with the private sector is by raising awareness of key environmental issues and mobilizing consumer action through communications and campaigns (including cause-related marketing campaigns). These partnerships also aim to highlight the beauty and uniqueness of WWF's priority places and species. This approach

includes, for example, consumer actions to encourage the purchase of sustainable products such as FSC-certified wood, or results in companies supporting campaigns that inspire action in favour of special places such as the Arctic or endangered species like the tiger.

3. Philanthropic partnerships

The third approach is articulated through specific programmes with companies to fund conservation projects and the institutions that deliver them. Philanthropic relationships with companies raise money for the conservation of key places and species, and the capability and tools to deliver such conservation impact.

WWF partners on a philanthropic or awareness-raising level with companies that are undertaking substantial action to improve their sustainability performance, or that have negligible environmental impacts.

Many partnerships with companies use a combination of these approaches.

WWF works with companies to achieve our conservation goals. NGO and company partnerships involve engaging in constructive dialogue while challenging each other with real issues. As such, they involve opportunities and risks for both parties. At WWF, we manage the risks by having clear guidelines and criteria in place, including a due diligence process. In all relationships, we maintain and exercise the right to public commentary.

TRANSPARENCY AND ACCOUNTABILITY

Results and impact, both qualitative and quantitative, are essential for us. We advocate transparency in action by all stakeholders as a crucial step toward sustainability. We believe that accountability for results and transparency to our supporters and our members on how we deliver those results are key to our approach of working in a constructive, cooperative manner with all our partners, including the corporate sector.

We want all our partnerships with companies to deliver the greatest impact possible, with the goal of creating lasting results at scale. We have, therefore, started a process of deeper and more systematic assessment of the targets and the outcomes we achieve in our work with the private sector and specifically through our bilateral partnerships.

All WWF offices are committed to continue reporting publicly on all our company relationships, their intent, objectives, and impacts, of which this report is one part. A Global Report of WWF's largest corporate partnerships globally can also be found [here](#).

THIS REPORT

The aim of this report is to give an overview of the partnerships that WWF-Romania has with individual companies. Funds obtained through corporate partnerships are typically used by WWF to:

CORPORATE PARTNERSHIPS REPORT – FY 2022 WWF-ROMANIA
MARCH, 2023

- Work with the company to reduce its impacts and footprint and to help shift sectors and markets toward sustainability in line with WWF's global conservation strategy;
- Raise public awareness of key conservation challenges;
- Directly support WWF conservation projects.

This WWF office is responsible for the (contractual) agreement(s) with the companies concerned. The activities of the engagements in many cases take place in other countries or regions.

In FY22, income from corporate partnerships represented 30% of this WWF office's total income.

PARTNERSHIPS WITH AN ANNUAL BUDGET OF MORE THAN EUR25,000 IN FY22

Company Name	<i>GARANTI BBVA</i>
Industry	<i>Banking</i>
Type of Partnership	Communications and awareness raising
Conservation Focus of Partnership	Climate & Energy Food Forests Freshwater Oceans Wildlife
Budget Range (in EUR)	25,000-100,000
URL link to partnership webpage	https://wwf.ro/ce-facem/corporate/garanti/
<p><i>Garanti BBVA has supported the conservation activity of WWF Romania since 2010, by redirecting 0.3% to transactions made with the WWF co-branded bonus card.</i></p>	

Company Name	<i>Revolut</i>
Industry	<i>Banking</i>
Type of Partnership	Communications and awareness raising
Conservation Focus of Partnership	Climate & Energy Food Forests Freshwater Oceans Wildlife
Budget Range (in EUR)	25,000-100,000
<p><i>This is an international partnership. In 2019, Revolut launched the "donate" function, users can donate directly towards WWF projects. Donations collected from Revolut Romania customers will be used for WWF Romania's activities in the Carpathian area and along the Danube.</i></p>	

Company Name	<i>JYSK Romania</i>
Industry	<i>Retail</i>
Type of Partnership	Communications and awareness raising
Conservation Focus of Partnership	Freshwater
Budget Range (in EUR)	25,000-100,000
URL link to partnership webpage	https://wwf.ro/ce-facem/corporate/jysk/
<p>With the support of JYSK, we ensure that the ecological reconstruction work at Mahmudia-Carasuhat continues. The main activities involve monitoring the fauna and flora in the reconstruction area, but also supporting the local communities.</p>	

Company Name	<i>LIDL Romania</i>
Industry	<i>Retail</i>
Type of Partnership	Communications and awareness raising
Conservation Focus of Partnership	Freshwater
Budget Range (in EUR)	100,000-250,000
URL link to partnership webpage	https://wwf.ro/ce-facem/corporate/lidl/
<p><i>Our partnership that started in 2020, the Zero Plastic Patrol, aims to eliminate plastic in nature. The Zero Plastic Patrol continued in 2022 with activities that involved local communities, authorities, students and ordinary citizens, who together found mechanisms to prevent plastic from ending up in nature. This year, the Patrol took place both in the Danube Delta area and in Braşov county.</i></p>	

Company Name	<i>IKEA</i>
Industry	<i>Retail</i>
Type of Partnership	Driving sustainable business practices
Conservation Focus of Partnership	Forests
Budget Range (in EUR)	250,000-500,000
URL link to partnership webpage	https://wwf.ro/ce-facem/corporate/ikea/
<p>This is an international partnership, together with IKEA, we support responsible forest management by implementing projects at the regional level, including the promotion of forest management certification in the FSC system.</p>	

PARTNERSHIPS WITH AN ANNUAL BUDGET OF EUR25,000 OR LESS IN FY22

The following list represents all corporate partnerships that this WWF office has with an annual budget of EUR25,000 or less (including pro bono or in-kind contributions) in FY22.

1. AFI Tech Park
2. Avery Dennison
3. Benevity
4. Bolton Food
5. Chilli Ideas
6. Cisimpex Romania
7. Deneris Trade (ISARA)
8. Erste Bank
9. Equitable
10. Fabrica de Bere Bună
11. Fundația Veritas 4 All
12. Geox
13. Medfusion
14. New Moon Management
15. Profine
16. RIMI
17. Societatea Comercială Reflector Ventures
18. Societatea Dezvoltare Comercial Sudului
19. SyncroSoft
20. The Coca Cola Foundation
21. TIFF
22. Velux
23. We Are Mono
24. ZUMM

For further information on corporate engagement at WWF-Romania, please contact:
Ioana Popescu / Project Manager / ipopescu@wwf.ro